



Hot Off The Press

LATEST STATISTICS FROM STATISTICS NEW ZEALAND



Embargoed until 10:45am – 2 March 2006

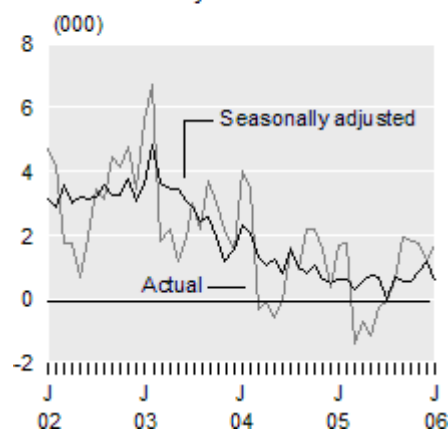
External Migration January 2006

Highlights

- **Visitor arrivals (250,600) were almost unchanged** from January 2005 (249,900).
- **There were more visitor arrivals from China (up 2,000) and Hong Kong (up 1,700), but fewer visitors from Korea (down 3,700),** compared with January 2005.
- **Seasonally adjusted visitor arrivals increased less than 1 percent** between December 2005 and January 2006.
- **Overseas trips by New Zealand residents were up 1 percent** between December 2005 and January 2006, on a seasonally adjusted basis.
- **Permanent and long-term arrivals exceeded departures by 500** in January 2006, on a seasonally adjusted basis.

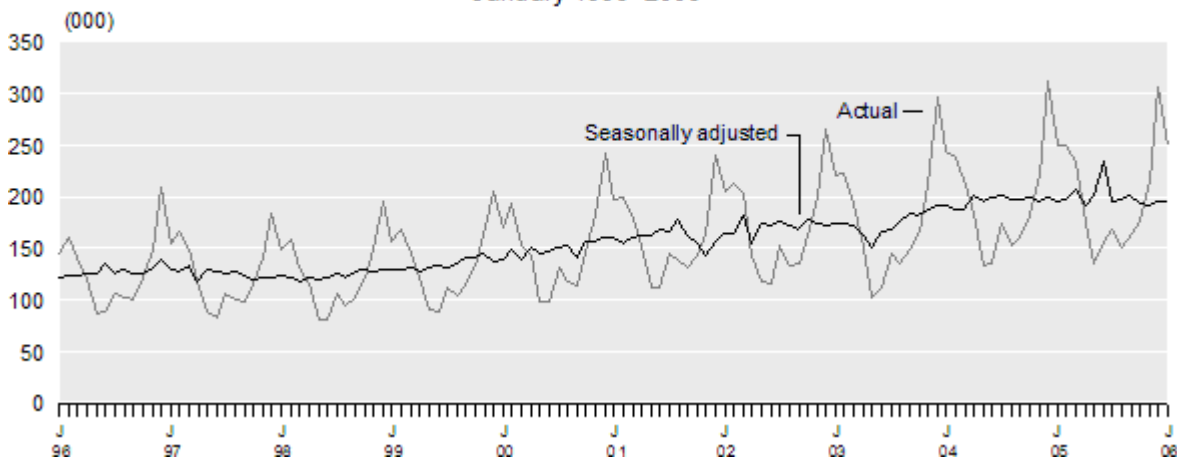
Monthly Net Permanent and Long-term Migration

January 2002–2006



Monthly Visitor Arrivals

January 1996–2006



Brian Pink
Government Statistician

2 March 2006
Cat 33.900 Set 05/06 – 143

There is a companion Media Release published – [External Migration: January 2006](#).

Commentary

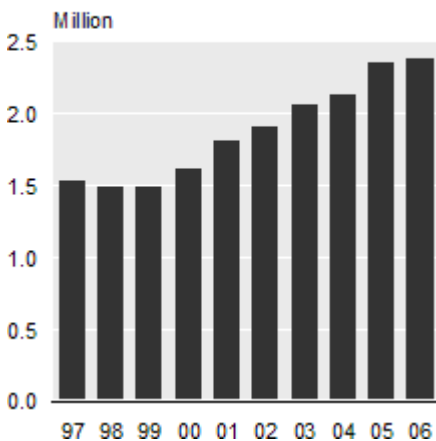
Visitor arrivals

There were 250,600 short-term overseas visitor arrivals to New Zealand in January 2006, up 600 (less than 1 percent) on January 2005.

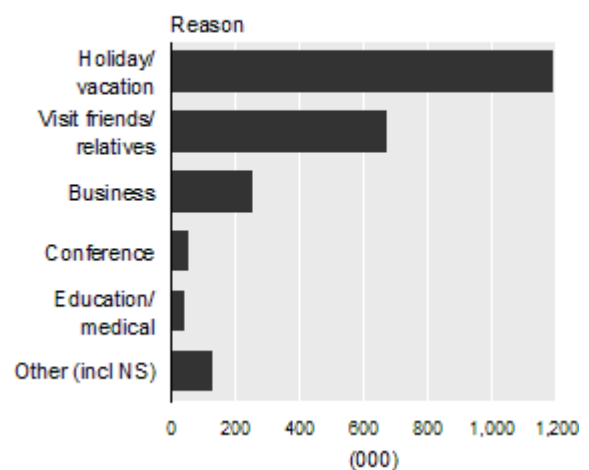
The number of stay days for all visitor arrivals in January 2006 was down 3 percent from the previous January, from 5.94 million to 5.77 million days. The average length of stay was 23 days in January 2006, down from 24 days in January 2005.

Seasonally adjusted monthly visitor arrivals were up less than 1 percent in January 2006, following a rise of 2 percent a month earlier.

Annual Visitor Arrivals
Year ended January



Visitor Arrivals by Reason
Year ended January 2006



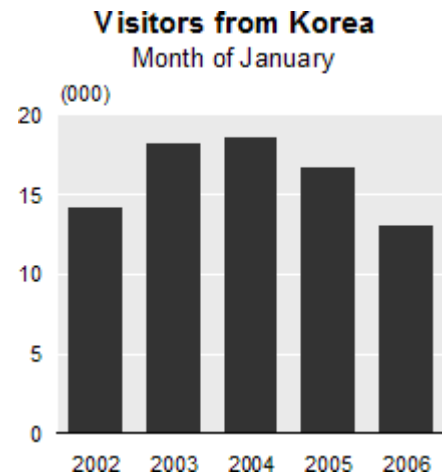
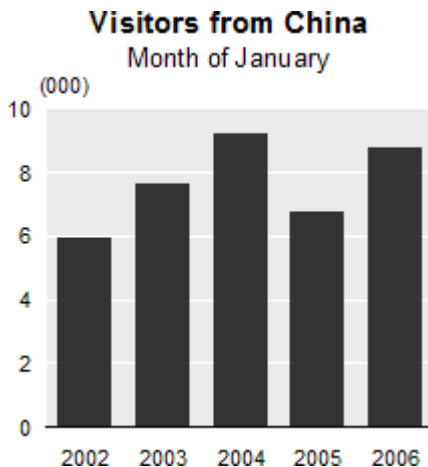
During the year ended January 2006, there were 2.384 million visitor arrivals, up 30,300 (1 percent) on the January 2005 year. Holidaymakers accounted for 50 percent (1,192,700) of the overseas visitors, 29 percent (675,500) came to visit friends and relatives (VFR), 11 percent (260,600) came on business, 2 percent (58,200) came for a conference, and a further 2 percent (46,800) came for education/medical reasons.

VFR arrivals in the January 2006 year were up 13,300 (2 percent) compared with the previous January year. There were also more business travellers (up 9,700 or 4 percent), holiday arrivals (up 3,500 or less than 1 percent), and visitors attending a conference (up 3,400 or 6 percent). Arrivals for education/medical reasons were down 3,200 (6 percent) in the year ended January 2006.

Note: Provisional weekly and four-weekly visitor arrivals data is available on the Statistics New Zealand website: www.stats.govt.nz. This data is updated each week with the most recently available information on visitor arrivals from the 10 major source countries.

Visitors by source country

In January 2006, there were more visitor arrivals from China (up 2,000 or 30 percent), Hong Kong (up 1,700 or 113 percent), Taiwan (up 1,100 or 32 percent) and Singapore (up 600 or 34 percent), compared with January 2005. The change in the timing of the Chinese/Lunar New Year, from February in 2005 to January in 2006, was a likely contributor to the increase in visitor numbers from these countries. Visitor arrivals from Australia also increased (up 1,000 or 1 percent), but there were fewer visitors from Korea (down 3,700 or 22 percent) and Japan (down 900 or 5 percent).



In the year ended January 2006, there were more visitors from Europe (up 6 percent), Oceania (up 2 percent) and the Americas (up less than 1 percent), compared with the January 2005 year. There were fewer visitors from Asia (down less than 1 percent). Two countries – the United Kingdom (up 20,700 or 7 percent) and Australia (up 13,000 or 2 percent) – were the major contributors to the annual increase in total visitor numbers. Other countries with increased visitor arrivals included China (up 7,900 or 10 percent), Hong Kong (up 3,800 or 15 percent), Ireland (up 3,600 or 20 percent), Taiwan (up 3,500 or 13 percent) and Fiji (up 3,100 or 18 percent). There were fewer visitors from Japan (down 12,500 or 7 percent), Korea (down 3,700 or 3 percent) and the United States (down 2,600 or 1 percent).

Note: Detailed visitor data is available in the January 2006 edition of the Statistics New Zealand publication *International Visitor Arrivals to New Zealand*, which can be ordered via the Statistics New Zealand website: www.stats.govt.nz.

New Zealand resident departures

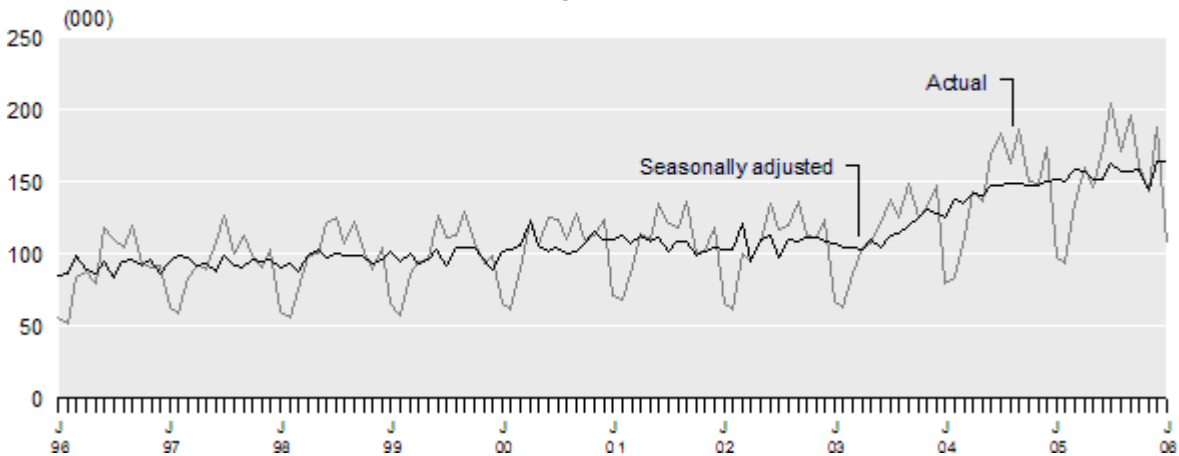
New Zealand residents departed on 107,700 short-term overseas trips in January 2006, an increase of 9,900 (10 percent) on January 2005.

In January 2006, New Zealand residents went on more trips to Australia (up 6,100 or 12 percent), China (up 900 or 26 percent) and Malaysia (up 800 or 105 percent) than in the previous January. There were fewer trips to Fiji (down 600 or 12 percent), the United Kingdom (down 300 or 11 percent) and South Africa (down 300 or 31 percent).

On a seasonally adjusted basis, New Zealand resident departures rose 1 percent between December 2005 and January 2006. This follows a rise of 13 percent between November and December 2005.

The number of intended days away for resident departures in January 2006 was down 1 percent to 2.16 million days, compared with the previous January. The average intended length of absence was 20 days in January 2006, down from 22 days in January 2005.

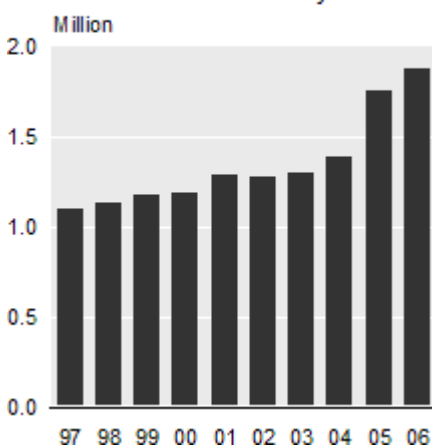
Monthly New Zealand Resident Short-term Departures
January 1996-2006



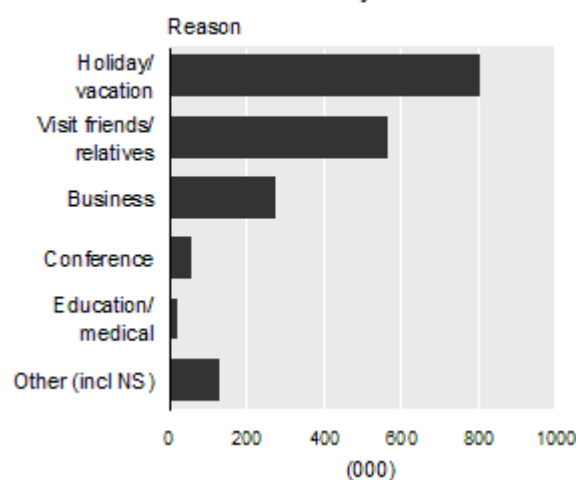
In the year ended January 2006, resident departures totalled 1.882 million, up 131,100 (7 percent) on the previous January year (1.751 million). There were more trips to Australia (up 59,800 or 7 percent), the United States (up 10,000 or 12 percent), the Cook Islands (up 10,000 or 30 percent), the United Kingdom (up 6,900 or 9 percent), Fiji (up 6,800 or 7 percent), China (up 4,600 or 10 percent) and Samoa (up 4,300 or 20 percent).

Holidaymakers accounted for 43 percent (808,900) of the departures during the January 2006 year. A further 30 percent (569,200) left to visit friends and relatives, 15 percent (278,600) went on business, 3 percent (61,100) attended a conference, and 1 percent (25,100) went for education/medical reasons.

Annual Resident Departures
Year ended January



Resident Departures by Reason
Year ended January 2006



Note: Provisional weekly and four-weekly resident departures data is available on the Statistics New Zealand website: www.stats.govt.nz. This data is updated each week with the most recently available information on resident departures to the 10 major destinations.

Permanent and long-term migration

Definition

Permanent and long-term (PLT) arrivals include people who arrive in New Zealand intending to stay for a period of 12 months or more (or permanently), plus New Zealand residents returning after an absence of 12 months or more. Included in the former group are people with New Zealand residency, as well as students and holders of work permits. Permanent and long-term departures include New Zealand residents departing for an intended period of 12 months or more (or permanently), plus overseas visitors departing from New Zealand after a stay of 12 months or more.

Analysis

PLT arrivals exceeded departures by 1,700 in both January 2006 and January 2005. In January 2006 there were 300 fewer PLT arrivals, and also 300 fewer PLT departures, when compared with the same month a year earlier. Non-New Zealand citizen arrivals decreased by 400 in January 2006.

There was no change in annual net PLT migration between December 2005 and January 2006 (both 7,000), after increases between October 2005 and December 2005. Previously, decreases were recorded each month from June 2003 until October 2005.

In January 2006, there were net inflows from the United Kingdom (1,600) and Japan (300), and a net outflow to Australia (2,600).

The seasonally adjusted series recorded a net PLT inflow of 500 in January 2006, compared with a net inflow of 1,200 a month earlier.

Permanent and Long-term Migration By country of citizenship

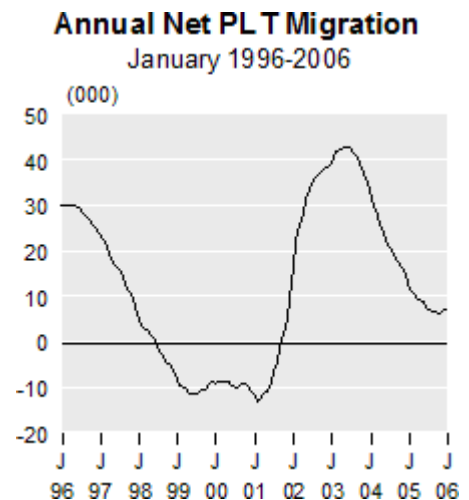
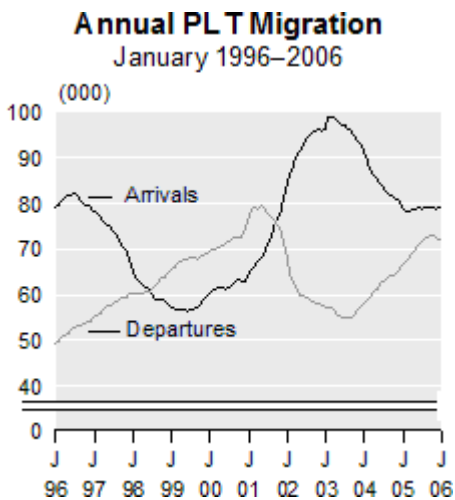
Country of citizenship	Month of January			Year ended January			Change from 2005 (%)	
	2004	2005	2006	2004	2005	2006	Month	Year
New Zealand								
Arrivals	2,700	2,400	2,500	27,700	24,800	24,300	5	-2
Departures	4,800	5,600	5,500	39,000	44,100	49,100	-3	11
Net	-2,100	-3,200	-3,000	-11,300	-19,300	-24,800	-9	28
Non-New Zealand								
Arrivals	7,800	6,900	6,400	63,800	54,500	54,400	-6	0
Departures	1,800	2,000	1,800	19,200	22,400	22,600	-7	1
Net	6,000	4,900	4,600	44,600	32,100	31,700	-6	-1
Total								
Arrivals	10,500	9,300	9,000	91,500	79,300	78,700	-3	-1
Departures	6,500	7,600	7,300	58,200	66,500	71,700	-4	8
Net	4,000	1,700	1,700	33,300	12,800	7,000	-1	-46

Note: All figures in this table are independently rounded.

In the year ended January 2006, there were 78,700 PLT arrivals, down 600 (1 percent) on the January 2005 year. Over the same period, PLT departures increased by 5,200 (8 percent) to reach 71,700. The overall result was a net migration gain of 7,000 in the January 2006 year, which is 46 percent lower than the net inflow of 12,800 people in the previous January year. Compared with the January 2005 year, non-New Zealand citizen arrivals were down 100 and non-New Zealand citizen departures were up 300. There were 500 fewer New Zealand citizen arrivals and 5,000 more New Zealand citizen departures.

In the year ended January 2006, there was a net PLT inflow of 10,000 from the United Kingdom, up 15 percent on the January 2005 year figure (8,700). There were also increased net inflows from Fiji (2,400), Germany (1,400), Samoa (1,200) and South Africa (1,200). In contrast, there were reduced net inflows from India (1,900), Japan (1,600) and China (1,000), down from net inflows of 2,400, 2,000 and 2,200, respectively, in the previous year. Overall, net PLT inflow from Asia has reduced, from 22,200 in the January 2004 year, to 8,800 in the January 2005 year, and then further to 6,500 in the January 2006 year.

There was a net outflow to Australia of 21,400 in the January 2006 year, an increase of 5,900 (38 percent) compared with the previous January year, and a net outflow of 800 to Korea.



Over the past decade, annual PLT arrivals reached an initial peak in July 1996 (82,000) and then dropped over the next three years, reaching a low of 56,300 in June 1999. Arrivals then increased to an all-time high of 98,700 in the year ended February 2003. Annual PLT arrivals then dropped steadily to a low of 78,100 in March 2005, before increasing to 79,100 in June 2005. There have been small fluctuations in annual arrival numbers since then, with a January 2006 level of 78,700. Over the same period, annual PLT departures rose steadily to a peak of 79,300 in May 2001, before falling to 54,700 in July 2003. Annual PLT departures subsequently increased to 73,000 in October 2005, before decreasing to 71,700 in January 2006.

As a result of the changes in annual PLT arrivals and departures, annual net PLT migration has fluctuated significantly. After reaching 30,200 in April 1996, there were reducing net inflows and then net outflows between 1998 and 2001. Following the net loss of 13,200 in the February 2001 year, there was a change in the direction of the net flow during 2001. This was followed by a rapid increase to a peak of 42,500 in the May 2003 year. The annual net PLT migration then dropped to a low of 6,000 in October 2005, before increasing to 7,000 in January 2006.

Split PLT data

Statistics New Zealand began separately identifying permanent arrivals from long-term arrivals in July 2003 (departing migrants are also separately identified). Within the long-term group, a further distinction is made between overseas visitors coming to stay in New Zealand for 12 months or more (long-term overseas visitors) and New Zealand residents returning after an overseas stay of 12 months or more (long-term New Zealand residents).

The classification of a person as a permanent or long-term migrant depends on that person's responses to the questions on the arrival and departure cards. Both cards require completion of one of two sections, depending on whether or not the person feels that they live or have lived in New Zealand. The choice of which section to complete is up to the individual, and the answer may result in a person being misclassified – usually as a permanent migrant instead of a long-term migrant.

Of the 9,000 PLT arrivals in January 2006, there were 3,500 permanent migrants, and 3,800 long-term visitors. A further 1,700 arrivals were classed as returning long-term New Zealand residents. For more information on the separate identification of permanent and long-term migrants, including data quality issues, see the *External Migration: September 2003* Hot Off The Press.

For technical information contact:
Ian Richards or David Lowrie
Christchurch 03 964 8700
Email: demography@stats.govt.nz

Technical notes

Nature of data

The statistics in this release are based on final external migration counts for the month of January 2006. They relate to the number of movements of travellers, rather than to the number of travellers – that is, the multiple movements of individual people during a given reference period are each counted separately.

Data for country groupings

As of December 2000, the country groupings used in this release are consistent with the New Zealand Standard Classification of Countries 1999 (NZSCC 1999). Prior to this date, country groupings were based on the NZSCC 1995. The following changes have resulted:

1. The Americas region (which includes Northern America, Central America, the Caribbean and South America) replaces Northern America. As a result, countries in Central and South America and the Caribbean are no longer included in the 'Other' category in Tables 6–10.
2. Minor revisions to some other regions.

New Zealand resident short-term departures

The commentaries relating to New Zealand resident short-term departures are based on the data for the country of main destination – that is, the country where each departing person intended to spend most of his or her time while away from New Zealand.

Changes in migrant category

In the preparation of migration statistics, the classification of each passenger is primarily determined by the passenger's response, on the arrival or departure card, to the question on intended or actual length of stay/absence. If the person's intention changes later during the trip, then they may also change their migrant category. For example, if a person comes to New Zealand with the declared intention of settling permanently, but in fact returns overseas after a few months, then that person is classified as a permanent/long-term migrant on arrival, but is later classified as a short-term visitor on departure. This is known as migration category jumping. Data users should recognise the limitations inherent in the information supplied by travellers.

Sampling accuracy

The statistics for short-term passenger movements by country (ie arrivals by country of last permanent residence and departures by country of main destination) are derived from a systematic random sample taken each month from arrival and departure cards, and are therefore subject to sampling errors. However, total counts for short-term arrivals and departures of overseas visitors and New Zealand residents are actual counts, which are not subject to sampling errors. Figures for permanent and long-term arrivals and departures are also actual counts and have no sampling errors.

INFOS database

All series in Tables 1–5 are available through the INFOS database, using the series identifiers shown. The series in Tables 1, 2 and 3 are available back to January 1960 and the seasonally adjusted series in Tables 4 and 5 are available back to January 1982. The seasonally adjusted migration series were all revised when new seasonal adjustment procedures were introduced in August 1998. Likewise, the seasonally adjusted figures, from January 1996 onwards, are now updated monthly.

Seasonally adjusted series

The purpose of seasonally adjusting a time series is to measure and remove the varying seasonal components (caused by regular events such as holidays) in the series. This makes the data for adjacent months more comparable. The X-12-ARIMA computer program is now used to produce the seasonally adjusted estimates of migration. In addition, the seasonally adjusted figures are subject to revision each month. The size of these revisions is expected to be minimal, with the largest revisions occurring in the months immediately prior to the current month.

The change to a four-term school year in 1996 resulted in changes to the seasonal patterns of the New Zealand resident arrivals and departures series. As a result, the seasonal adjustment for the two series was unsatisfactory. To overcome this, a two-stage procedure was introduced in August 1998. The series prior to 1996 were seasonally adjusted separately and the values fixed, while the series from January 1996 onwards are now seasonally adjusted each month and revised if appropriate. Further information on the seasonally adjusted migration series, including information on the revision procedures, can be obtained from the Statistical Methods Division, Statistics New Zealand, Christchurch, phone 03 964 8700, fax 03 964 8791.

New migration processing system

To capture survey information more efficiently, Statistics New Zealand is developing new processing systems which incorporate scanning and image recognition technology. A new migration processing system using this technology was first used to process the arrival and departure cards for June 2004. A key difference between the new and previous systems is that there is now no need to manually enter the passport number for each traveller. In addition, classing (as overseas visitors, New Zealand residents, or permanent and long-term (PLT) migrants) and capture of the information required for the migration sample are done automatically for the majority of the cards. Those cards that cannot be classed (or are classed as PLT) and those with fields that cannot be recognised are manually processed using the card image. It is expected that operator intervention should only be required for approximately one-fifth of the cards. The new system, designed to capture the same information as previously captured, is used only for the production of statistics.

It is expected that data captured using the new system will be largely consistent with previous data. Users need to be aware of the changes to the processing system when comparing data for June 2004 onwards with data for earlier periods.

More information

For more information, follow the [link](#) from the Technical notes of this release on the Statistics New Zealand website.

Copyright

Information obtained from Statistics New Zealand may be freely used, reproduced, or quoted unless otherwise specified. In all cases Statistics New Zealand must be acknowledged as the source.

Liability

While care has been used in processing, analysing and extracting information, Statistics New Zealand gives no warranty that the information supplied is free from error. Statistics New Zealand shall not be liable for any loss suffered through the use, directly or indirectly, of any information, product or service.

Timing

Timed statistical releases are delivered using postal and electronic services provided by third parties. Delivery of these releases may be delayed by circumstances outside the control of Statistics New Zealand. Statistics New Zealand accepts no responsibility for any such delays.

Next release ...

External Migration: February 2006 will be released on 21 March 2006.

Statistics New Zealand: The first source of independent information for your key decisions.

Tables

The following tables can be downloaded from the Statistics New Zealand website in Excel 97 format. If you do not have access to Excel 97 or higher, you may use the Excel file viewer to view, print and export the contents of the file.

List of tables

1. Arrivals by class, January 1996–2006
2. Departures by class, January 1996–2006
3. Net migration, January 1996–2006
4. Arrivals, seasonally adjusted, January 2005–2006
5. Departures, seasonally adjusted, January 2005–2006
6. Overseas visitor arrivals, by country of last permanent residence
7. New Zealand resident short-term departures, by country of main destination
8. Permanent and long-term arrivals, by country of last permanent residence
9. Permanent and long-term departures, by country of next permanent residence
10. Net permanent and long-term migration, by country of last/next permanent residence